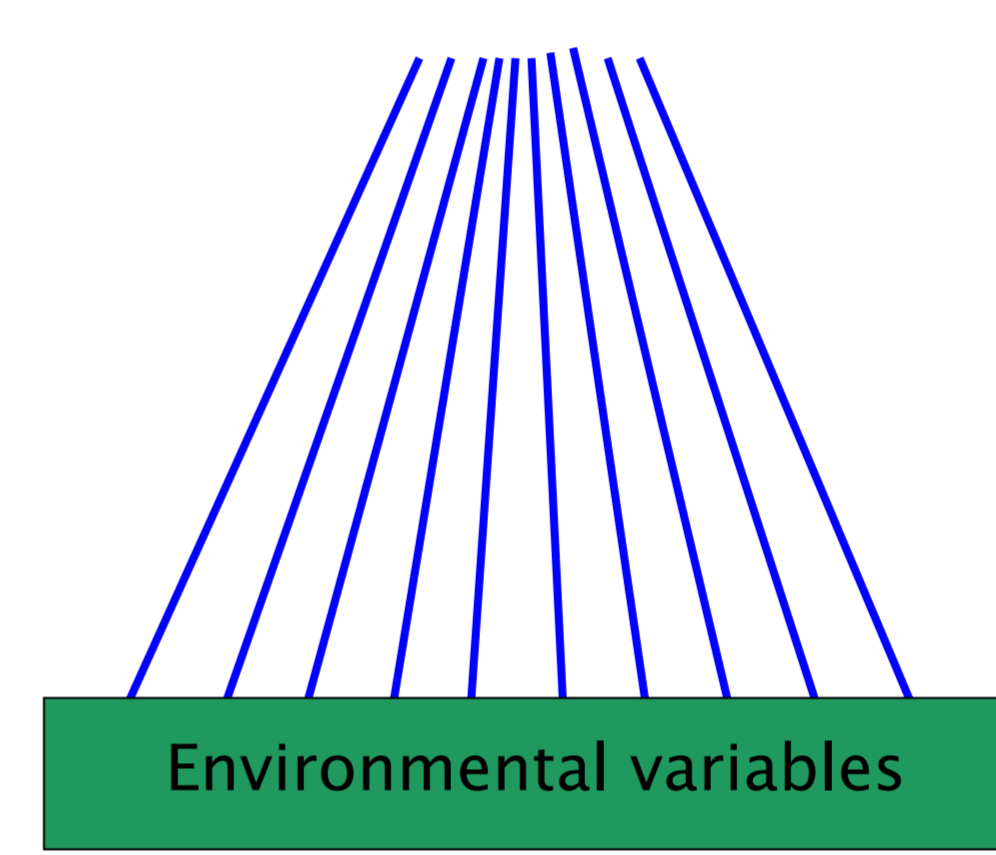
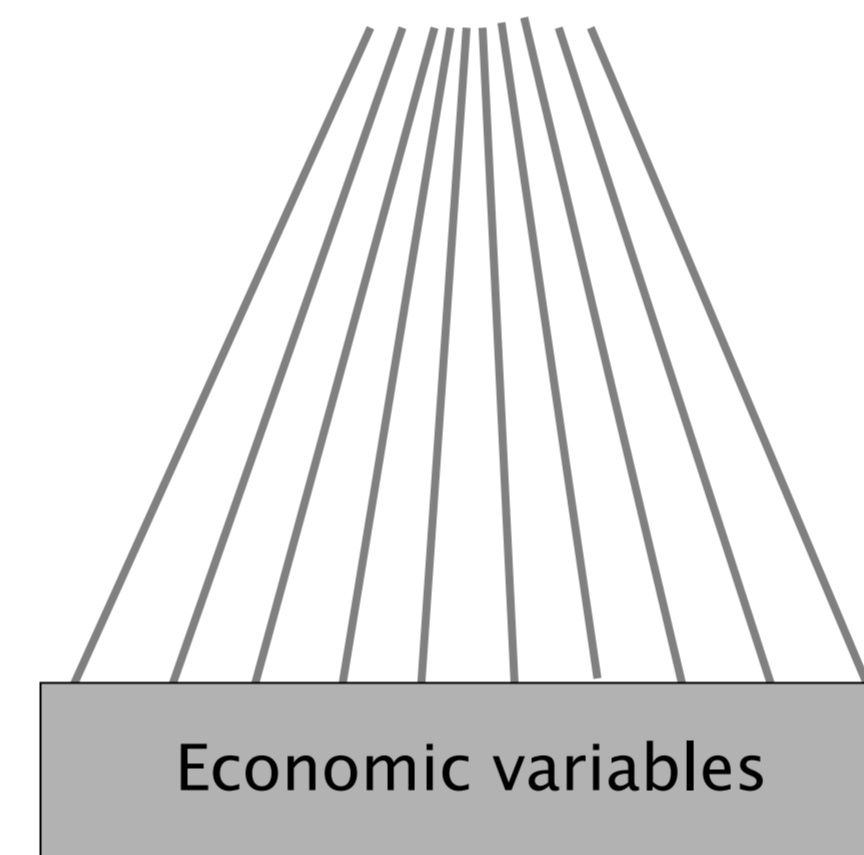
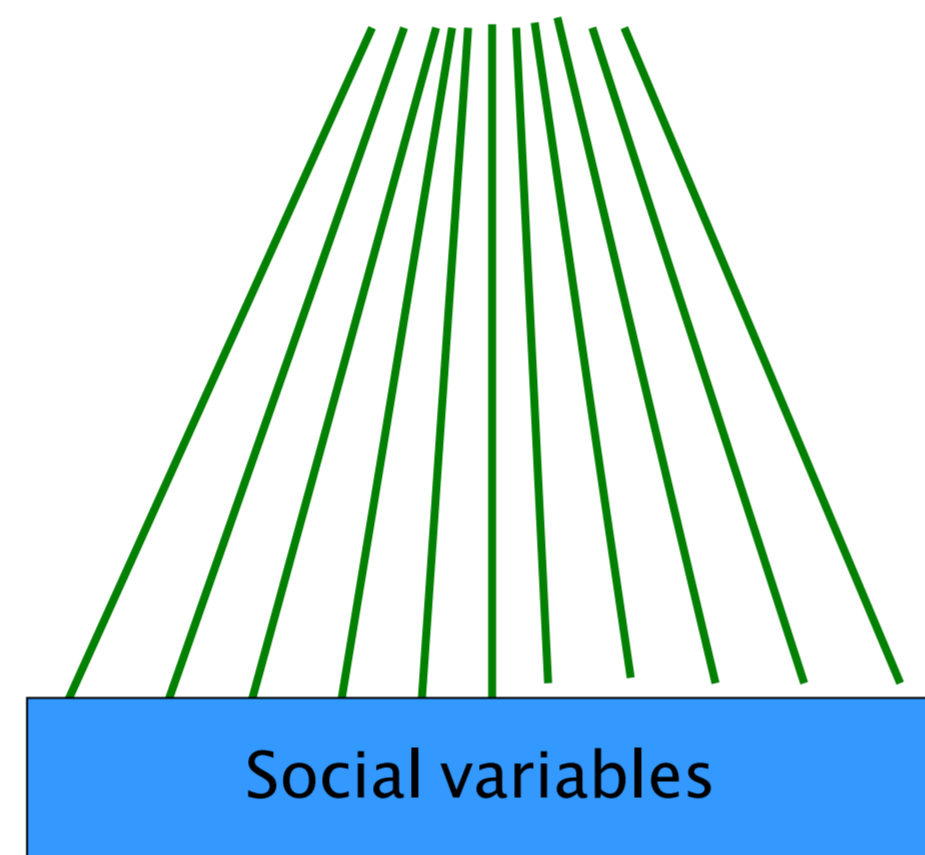
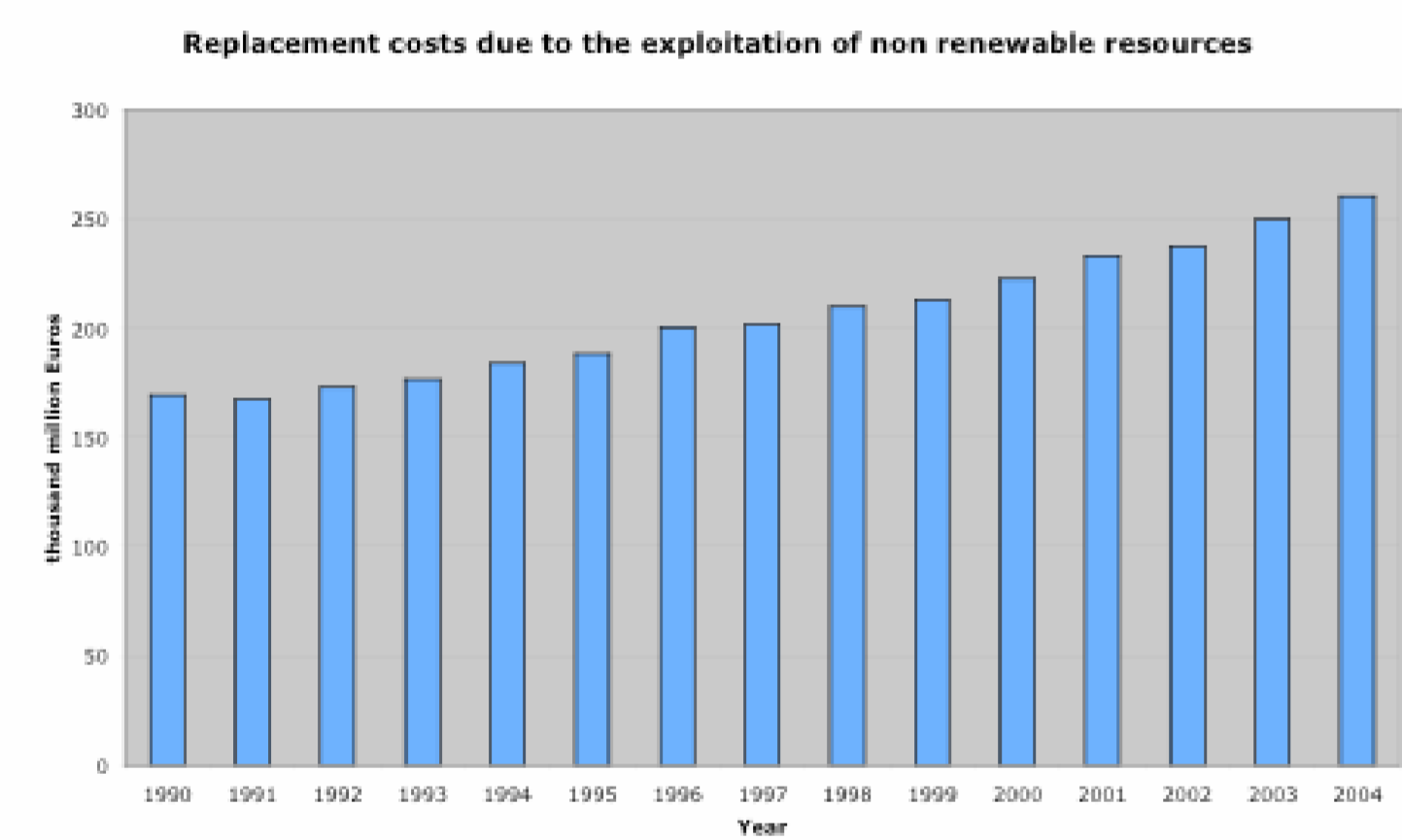
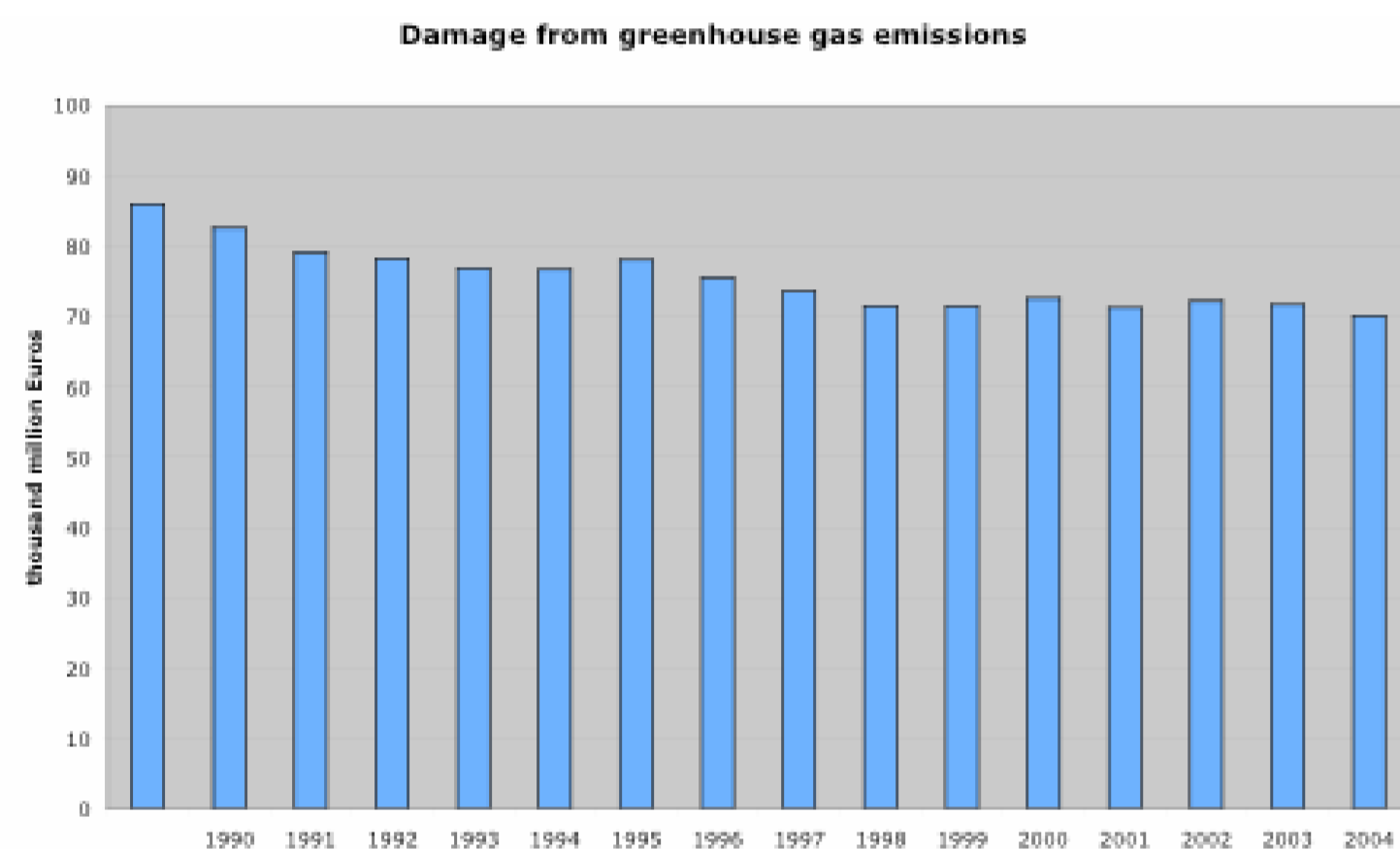
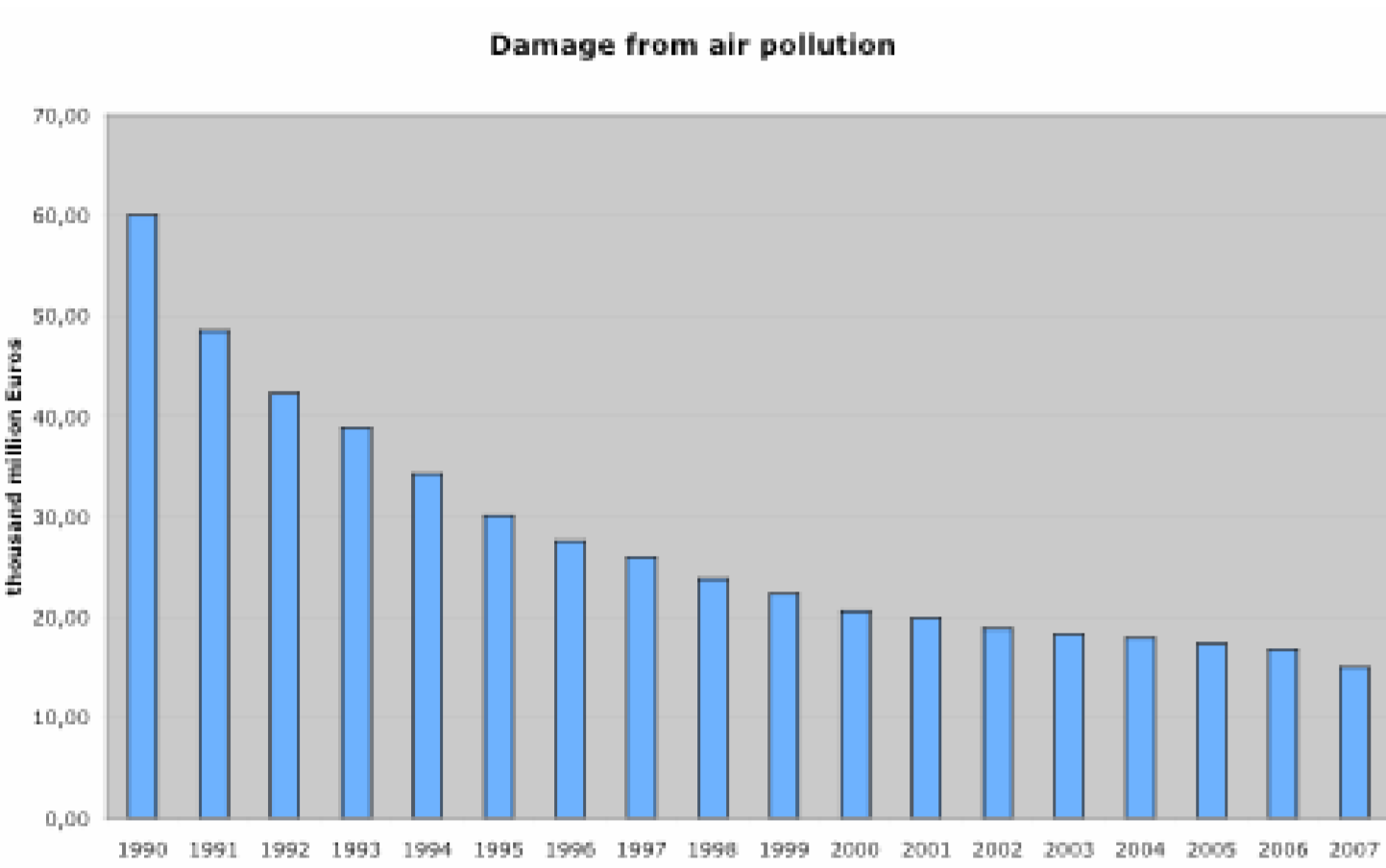
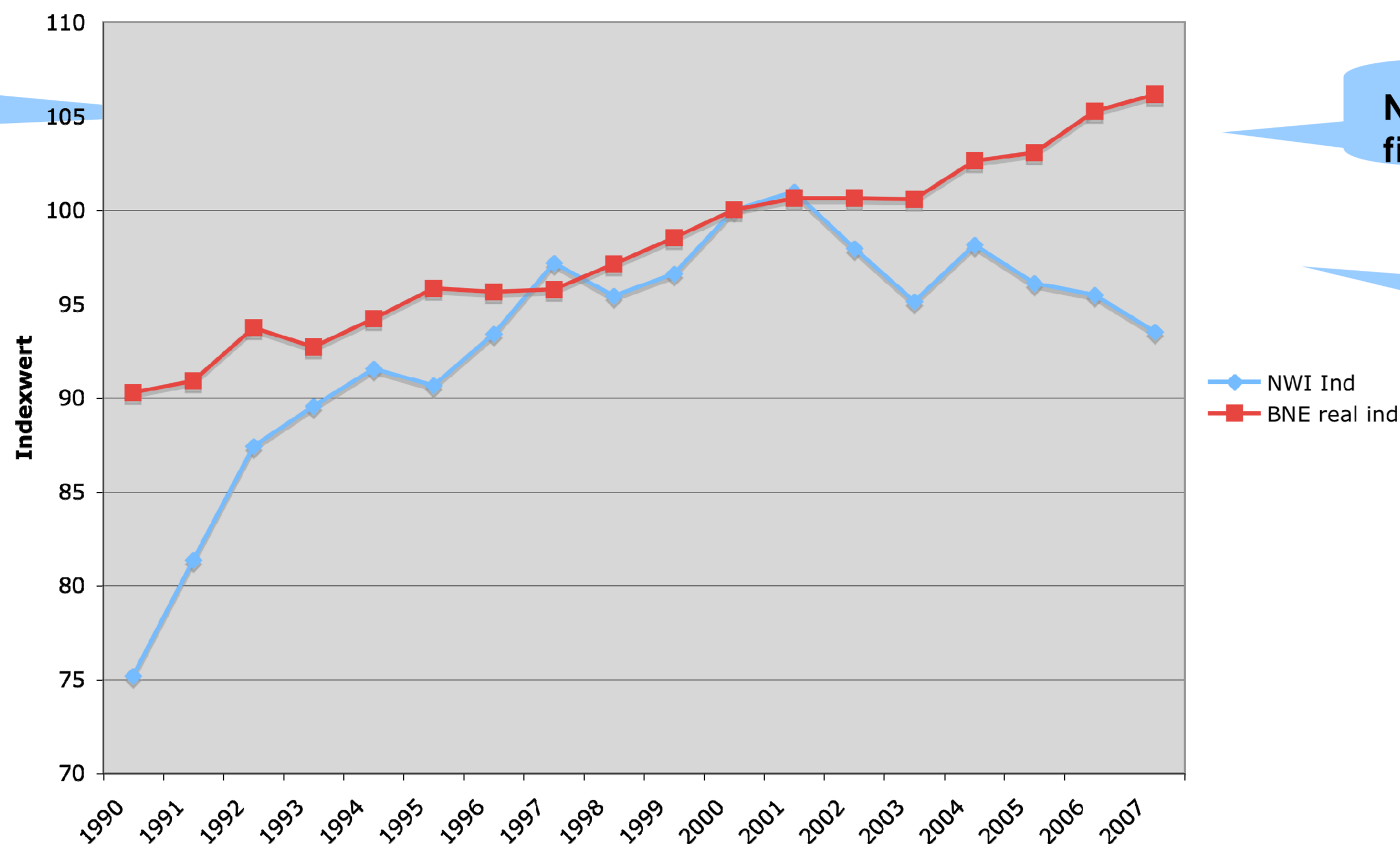


The National Welfare Index (NWI) – Calculation and Aggregation

Diefenbacher, H.¹ & Zieschank, R.²

++ an index in the context of **sustainable development** ++ indicates the **welfare of a country** as a new information instrument ++ **complementary to the GDP** ++ focuses on economic, social, and environmental aspects on the level of national accounts ++ based on **21 variables** which modify the GDP approach ++ fills an existing gap in monetary information systems of a country ++ is a political instrument for discussing growth, sustainable development and social progress ++ see Poster 2

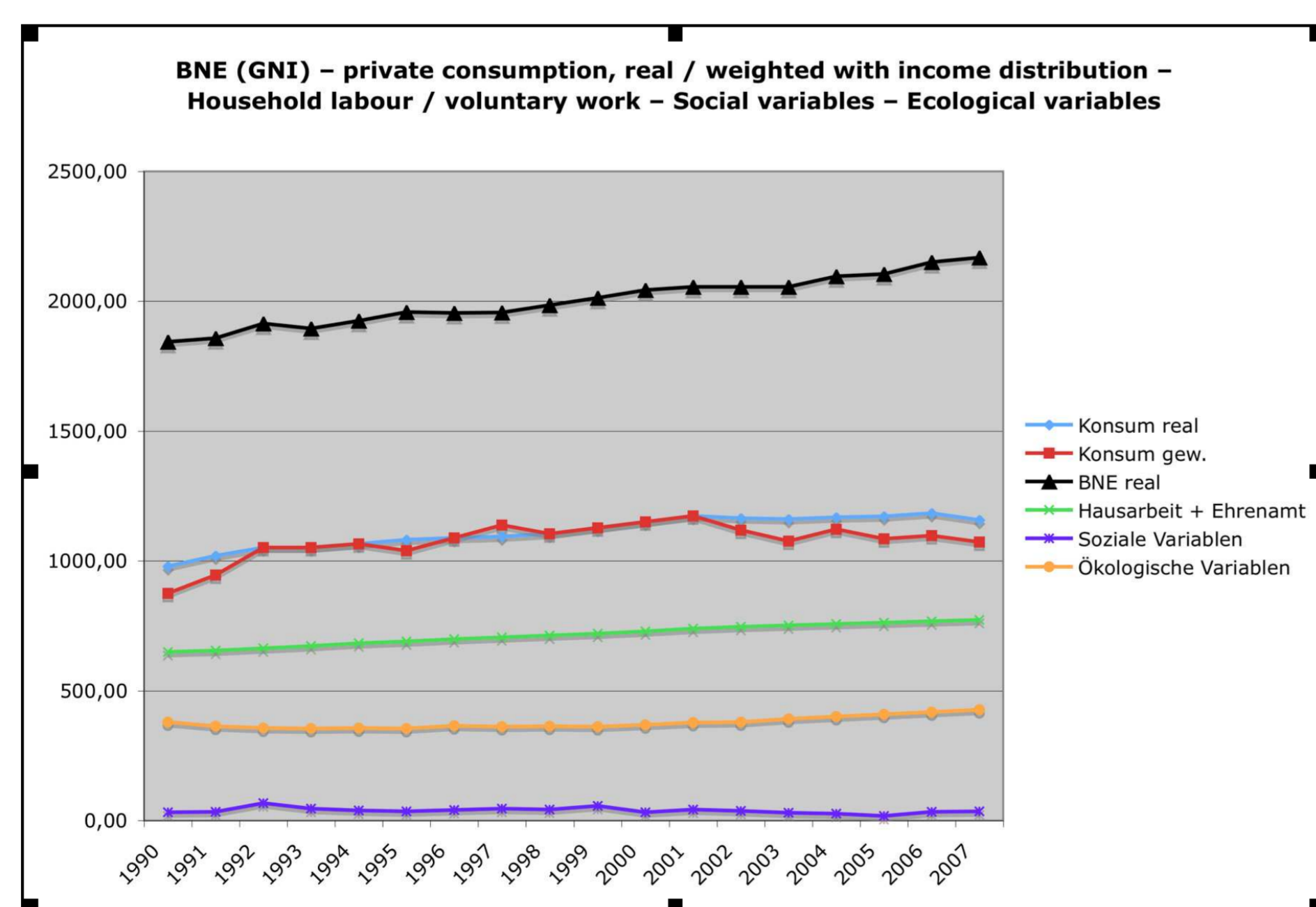
modifizierter NWI / BNE im Vergleich: 2000 = 100



- Index of income distribution
- Weighted consumption expenses
- Value of Housework
- Value of voluntary work
- Public expenditures on health care and education
- Consumer durable goods
- Travelling between home and workplace
- Costs of traffic accidents
- Costs of crime
- Cost of alcohol and drug abuse
- Net change in fixed capital
- Change in capital account
- Net new indebtedness

- Compensatory social expenses due to environmental impacts
- Damage from water pollution
- Damage from soil pollution
- Damage from air pollution
- Damage from noise
- Loss and profit from changes in wetlands
- Damage from the loss of agricultural areas
- Replacement costs for the exploitation of non renewable resources
- Damage from CO₂ emissions
- Public expenditures on ecological transformation

SUMMARY: LOGIC OF THE NWI



1 starting point: Private consumption weighted with income distribution

2 + welfare-creating components not included in the GDP:
e.g. house work, voluntary work: **Addition of the 'goods'**

3 - welfare reducing components:
e.g. environmental impacts, traffic accidents: **Subtraction of the 'bads'**

4 - / + net new indebtedness, public expenditure on ecological transformation

CONTACT

¹ Prof. Dr. Hans Diefenbacher, Alfred Weber Institute, University of Heidelberg / Protestant Institute for interdisciplinary Research (FEST), Schmeilweg 5, D-69118 Heidelberg; hans.diefenbacher@fest-heidelberg.de

² Dipl.-Verw. Wiss. Roland Zieschank, Environmental Policy Research Centre (FFU), Freie Universität Berlin, Ihnestraße 22, D -14195 Berlin; zieschan@zedat.fu-berlin.de

REFERENCES

[1] Diefenbacher, H. & Zieschank, R. (2010): Wohlfahrtsmessung in Deutschland – Ein Vorschlag für einen Nationalen Wohlfahrtsindex (Welfare Measurement in Germany – a suggestion for a new welfare index). Final Report – research index FKZ 3707 11 101/01. UBA-Reihe Texte 2/2010. Dessau.

www.fest-heidelberg.de
www.fu-berlin.de/ffu