

# Gaining Acceptance?

## Art in the Nuclear Anthropocene



Ele Carpenter  
Goldsmiths College, University of London & Arts Catalyst



Ken & Julia Yonetani,  
*Crystal Palace: The great exhibition of the works of industry of all nuclear nations (2013)* .

31 Chandeliers representing the number of operating plants in each country.







**Figure 4.2:** The past meets the future: menhirs, cromlechs and dolmens of Stone Age and markers of the WIPP project  
Photos from left to right and from top to bottom (Rosmarie Zurbuchen, Zürich): Clensy (Yverdon, original position) and Musée Laténium Hauterive (Switzerland), cromlech of Almendres and dolmen of Zambujeiro, both near Evora, Portugal, dolmen of Erzingen, southern Germany, Spikes, menacing earthworks and forbidden blocks from WIPP (from Trauth et al. 1993)





Fault lines, water channeling.  
URL, Horonobe, Japan, 2014.





URL, Horonobe, Japan, 2014.



Vitrified waste canisters:  
2000 watts thermic load

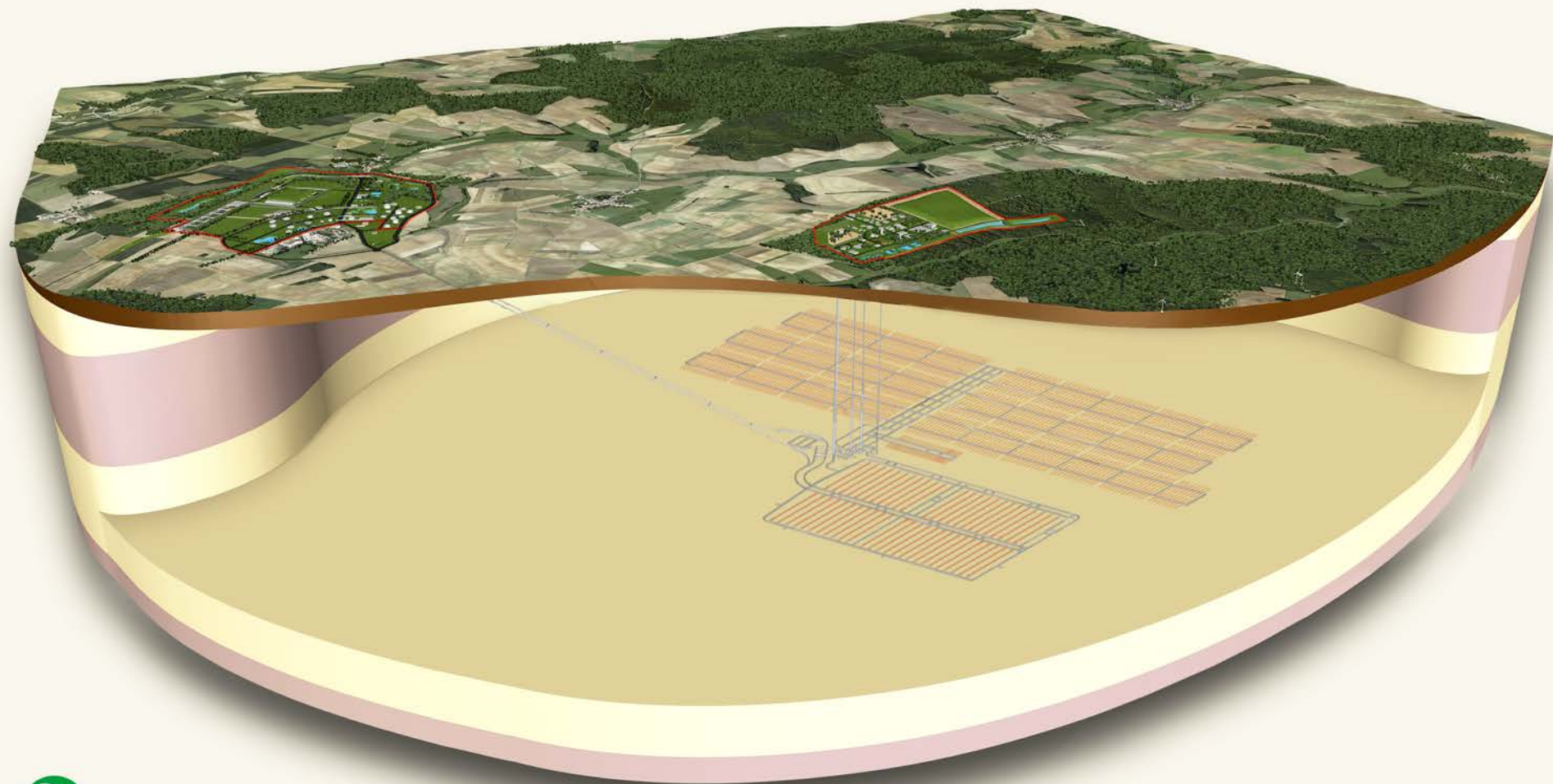
Stored above ground  
for 60+ years

When heat has decayed  
to 500 watts

They can go  
Underground  
for 100,000 years

Model of Vitrified Waste, Horonobe, Japan.





Cross-section  
Bure, Northern France, September 2014.





Model canister of radioactive waste  
URL, Bure, France, September 2014.



Cell for waste canisters  
URL, Bure, France, September 2014.





Surface research lab: Drift and cell.  
Bure, France, September 2014.



Cell interior  
URL, Bure, France, September 2014.





Field trip: Archeologist, Sweden and Netherlands, Ministerial Advisor, Canada; JAEA Japan; RAWRA Czech Republic.

URL, Bure, Northern France, September 2014.



500m underground  
URL, Bure, Northern France, September 2014.



キの不足④需要者の食  
三軒の熟練者によって  
の命運は前途多難である  
無意義ではあるまい。

つた

四人岩諏訪神社に祀る(昭和五・三)

神社境内の繁り立った松  
はい仙台黒御影石に「記  
碑が、ひっそりと据え  
」とともに、同港がか  
取引されたほど盛況と発  
の魚市場は新鮮な魚で  
他の朝の男の世界に、先



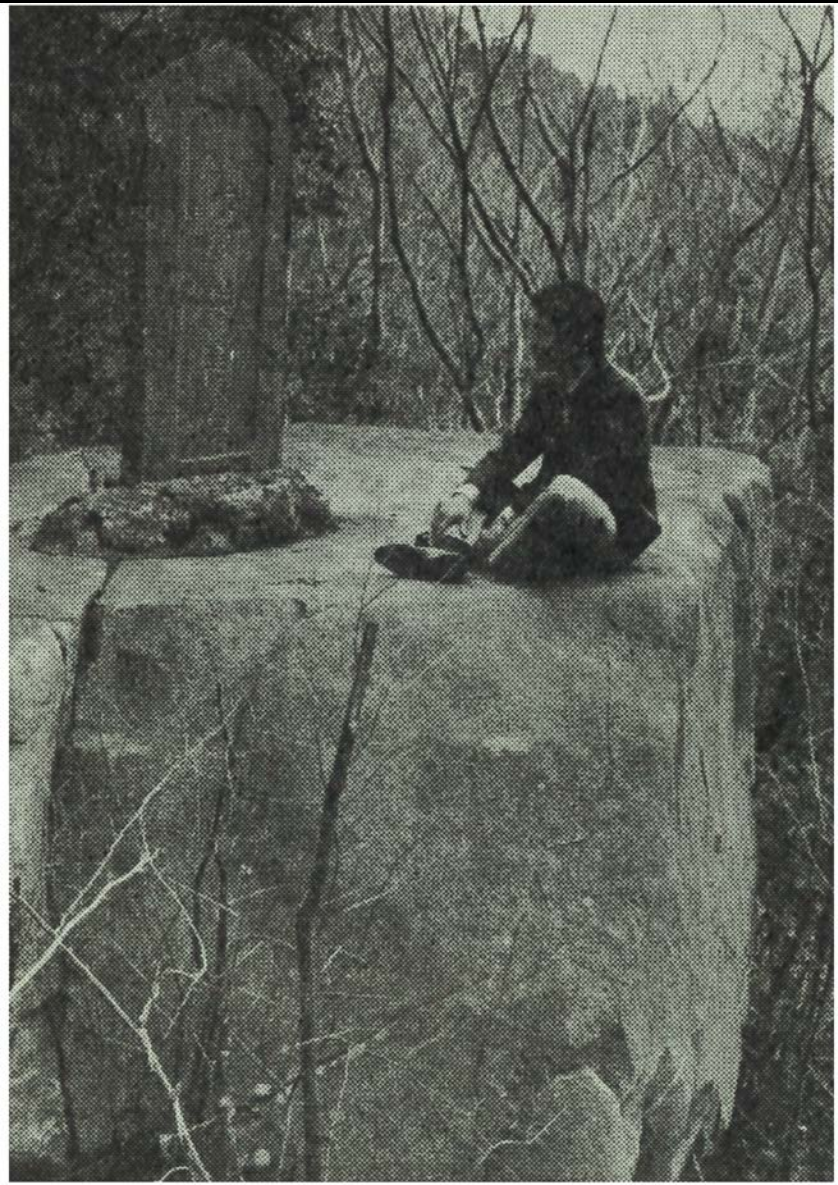
福島県史18産業経済―(昭和四五・三)は、当時の趨勢を「大正期は全国的にみると、大きな漁港においては問屋資本による問屋制流通機構が支配的な時期にあった。すなわち、各主要漁港では問屋が港に棧橋をならべて漁船を誘致し、漁業者から漁獲物の販売委託をうけて仲買人に



Kota Takeuchi, Take Stone Monuments Twice, 2013.

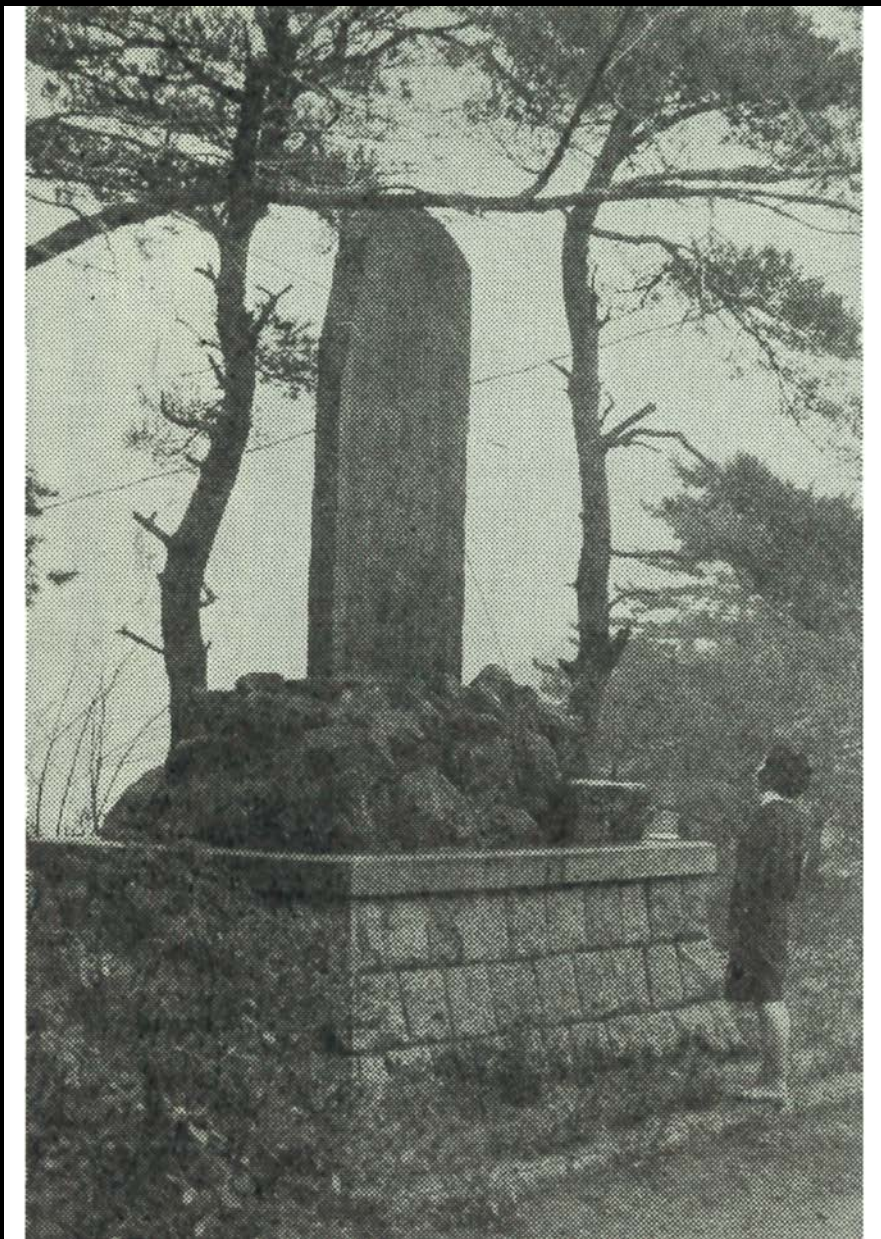
From: 'Economic History in Modern age of Iwaki' Ichiro Saito, 1976.





Kota Takeuchi, Take Stone Monuments Twice, 2013.  
From: 'Economic History in Modern age of Iwaki' Ichiro Saito, 1976.





Kota Takeuchi, Take Stone Monuments Twice, 2013.  
From: 'Economic History in Modern age of Iwaki' Ichiro Saito, 1976.



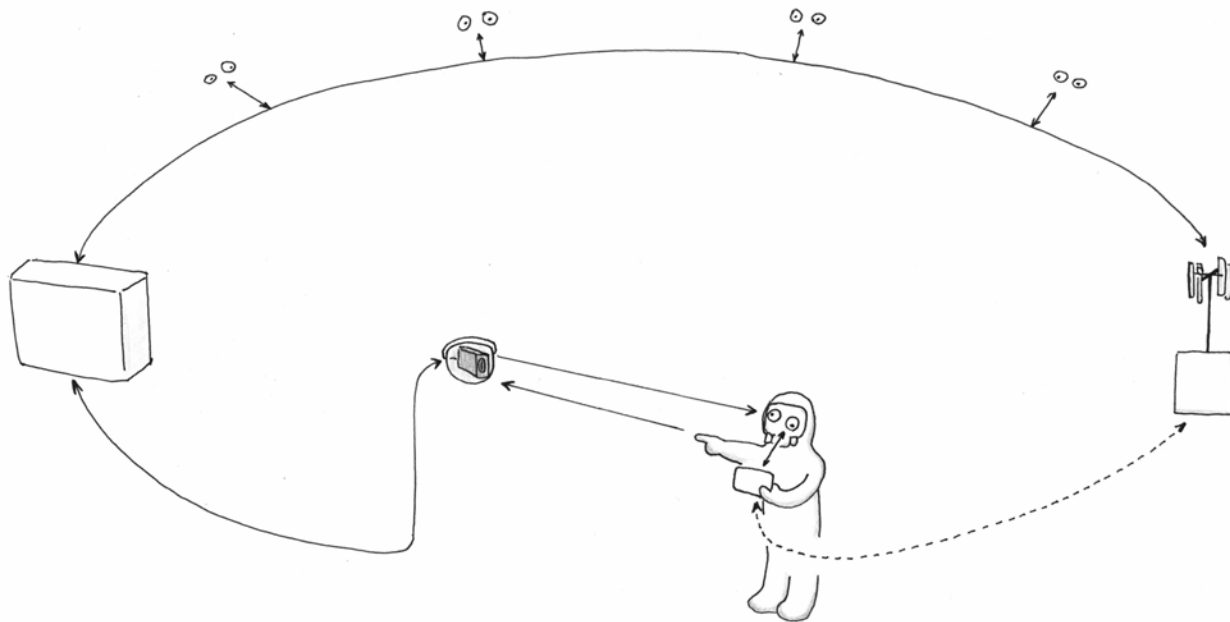


Kota Takeuchi asking about labor conditions at the Fukushima No.1 nuclear power station in a TEPCO press conference, 2011.





Open Secret, 17 March – 1 April, 2011



Kota Takeuchi, Finger Pointing Worker, Network as Mirror , 2011.  
Pencil and ink on paper, 21x29.7cm. Courtesy of the artist and SNOW Contemporary, Tokyo





Artists Placement Group 1966-1989.

Tate purchased the APG Archive in 2006

Raven Row Gallery, London, 2012.







William Verstraeten's, 'Metamorphosis' HABGOG, Netherlands.  
Commissioned by Hans Codée, COVRA, to help gain public acceptance.project.





William Verstraeten's, 'Metamorphosis' HABGOG, Netherlands.



**THE SECONDS REMAINING BEFORE  
THE WASTE THAT'S STILL HERE  
IS SAFE FOR US ALL**

**A NUCLEAR SEMIOTIC TOTEM - THOMSON & CRAIGHEAD**

<http://www.thomson-craighead.net>





Actinium Field Trip, Farmer Kuse and his cows, Hokkaido, Japan, 2014.  
Artists, Anthropologist, Arthistorian, Activist, Curators.



Underground Research Laboratory (URL): Artists and Lawyers  
Visitor Center, Horonobe, Japan, 2014.





Reindeer Branding,  
URL, Lift shaft, Horonobe, Japan, 2014



Reindeer Branding,  
URL, Visitor Center, Horonobe, Japan, 2014.





Visitor Center  
URL, Bure, Northern France,  
September 2014



## Découvertes en forêt

La forêt est présente tout autour de nous. Milieu riche d'une grande biodiversité et lieu de production de bois, elle est également un espace de loisirs pour les promeneurs, les cueilleurs et les chasseurs. Mais connaissez-vous vraiment la forêt ? A-t-elle secrès ses secrets ?

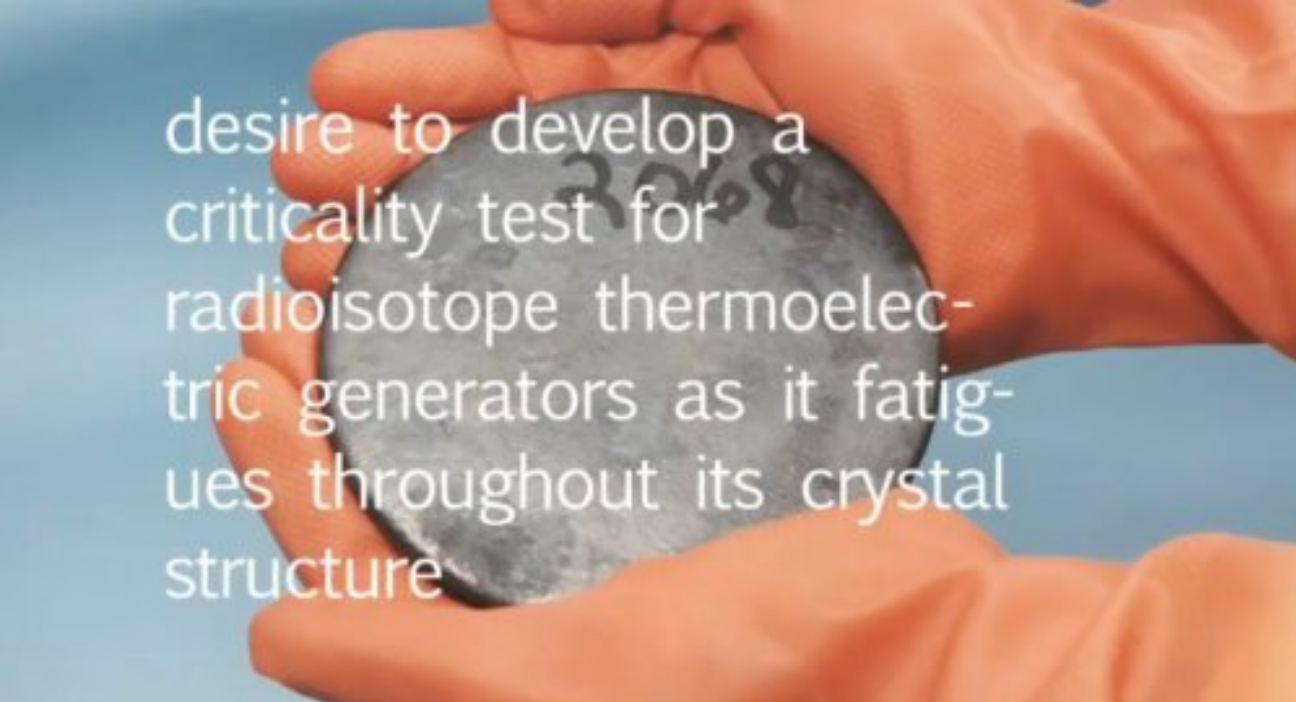
Nous vous invitons à suivre les scientifiques et les forestiers qui étudient, protègent et explorent les zones boisées.

Poussez les branches en avant dans l'exposition « Découvertes en forêt ».

Bonne visite ...

Visitor Center  
URL, Bure, France, September 2014.





desire to develop a  
criticality test for  
radioisotope thermoelec-  
tric generators as it fatig-  
ues throughout its crystal  
structure

Andrew Weir, 2014

The Plureal Deal is a material history of Plutonium-239 told through a loose re-make of the 2013 Toyota car advert 'The Real Deal'.

It takes in the cosmic origins of Uranium, the geology of Uranium deposits, Soviet mining in Kazakhstan, the conversion to Plutonium in the radiation process, the powering of 'cloud computing' infrastructures, browser interfaces and promotional videos, speculative Uranium glow sticks and drug dealers in 1990s rave culture, the long-term storage of radioactive materials in repository sites, and current workshop-based and computational-based future scenario planning, anticipating its deep futures.

It is currently in progress as a video, some writing, diagrams, workshop proposals and potential collaborations.







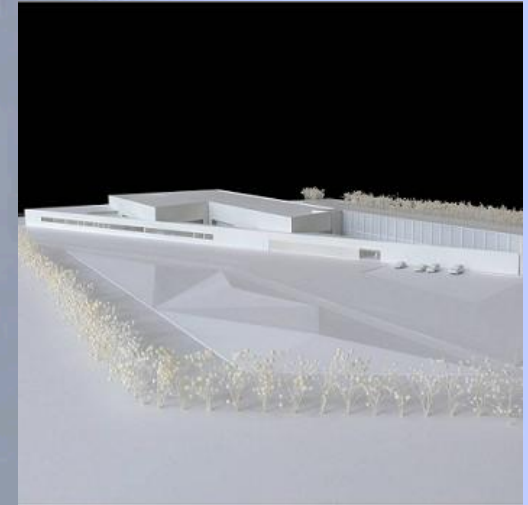
James Acord, Round table 1999.  
Reconstructed for the Nuclear Culture Symposium, Arts Catalyst, 2013. Actinium Forum, Sapporo, 2014.

# Proposed UK Nuclear Archive

Near Wick airport, Caithness, Scotland  
26 km of civil nuclear records dating back to the 1940s  
NDA £20 million

Shared facility with the North Highland archive  
Accessible to public and nuclear community  
Archive operational by 2016/17 (?)

Dounreay's records will be moved first (250 tonnes of documents)  
Final closure of Dounreay 2025  
Shift from decommissioning to archiving







Cumbrian Alchemy: Atomic Priest at Castlerigg



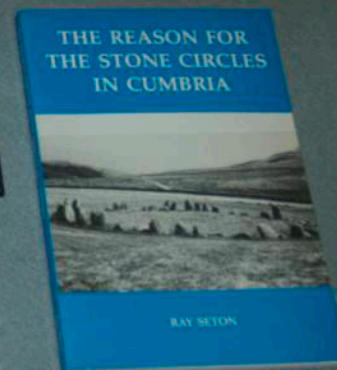
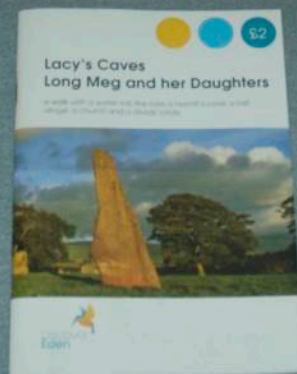
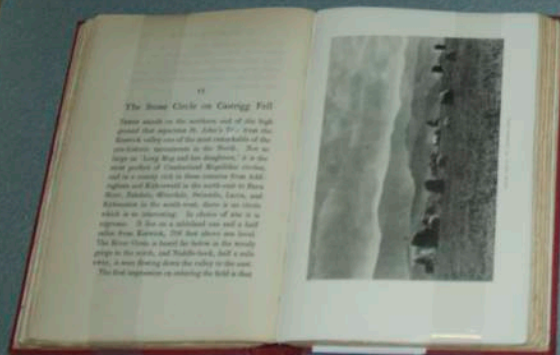
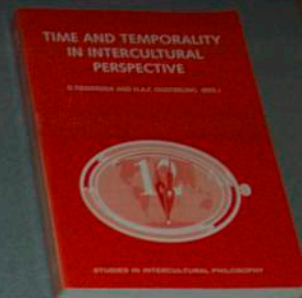
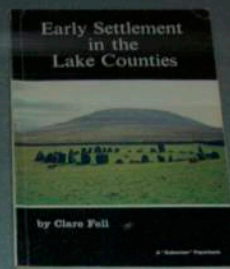
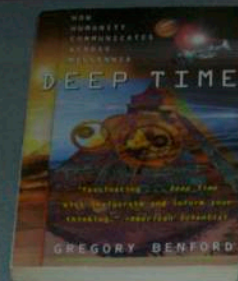
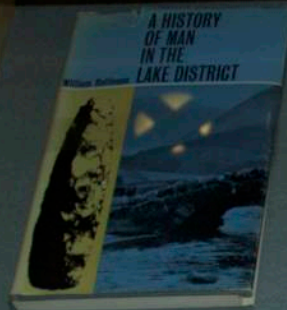
Cumbrian Alchemy





Cumbrian Alchemy, archive drawer





Cumbrian Alchemy, deep time drawer





Robert Williams, Bryan McGovern Wilson, Cumbrian Alchemy, 2014.

TOWARDS  
A  
NUCLEAR  
CULTURE

human beings activate **MEMORY** and pass it on  
we need to stay awake to make **SAFETY**  
a priority for humankind

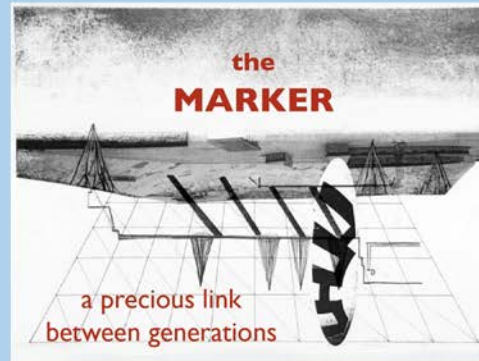
GEOLOGICAL REPOSITORIES BECOME PLATFORMS FOR

**ARTISTIC RESEARCH** & **LANDSCAPE DESIGN**

↳ **MARKERS** are multilayered artistic devices built above-ground through the implementation of a specific **ARCHITECTURAL VOCABULARY** with codes, symbols & signs that evolve with time

↳ **MARKERS** become a **TRANSMISSION MEDIUM** to preserve **MEMORY**

↳ **MARKERS** create a visible framework for the **ARCHIVES OF THE FUTURE**



a new way of commitment towards safety

introduces the artistic and philosophical factors

allows a higher level of consciousness

a privileged part of the long-term **SAFETY** story

writers-  
explorers

artists-  
guardians

scientists-  
archaeologists

L  
A  
B  
O  
R  
A  
T  
O  
R  
Y

provide

MULTIDISCIPLINARY dynamism & sensitive **MONITORING**

two separate realms should

**WORK TOGETHER**

How to ensure the  
SECURITY OF THE LIVING WORLD ?



agencies  
scientists  
stakeholders  
local communities  
international bodies



artists  
writers  
architects  
sociologists  
philosophers

Cecile Massart





Miyamoto Katsuhiro  
Shrine for the Fukushima Daiichi Sakae Nuclear Plant,  
Aichii Arts Center, Nagoya, 2013